

AND-STROBE-KIT-1
includes AND-PIA-2

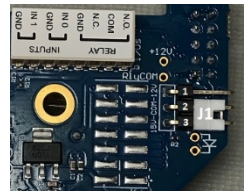


AND-STROBE-KIT-1D
includes AND-PIA-2D

BOARD INSTALLATION

1. Warning: Remove power prior to installation to avoid possible damage of components.

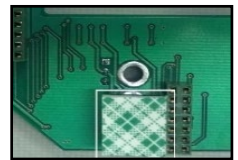
2. You should find the 15VDC output contact factory-installed via the 2-pin jumper on J1, with the jumper set across pins 2 and 3. When configured for switched 15VDC, please make sure not to prevent the output from resulting in a 15VDC short to ground.



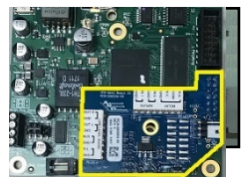
3. For AND-PIA-2, if a display cable is connected to J9 of the main controller board in the AND device, move the cable up to J10.



4. Remove the backing from the mounting tape on the underside of the board.



5. Line up the two 14-pin connectors with headers J9 and J13 of the main controller board. Press the peripheral



OVERVIEW

The AND Strobe Kit (AND-STROBE-KIT-1 / AND-STROBE-KIT-1D) includes a strobe and a peripheral interface board (AND-PIA-2 / AND-PIA-2D). The PIA interfaces with the strobe via the General Purpose Output Relay (N.O. or N.C; dry, 12 or 15 VDC, 1A max).

DEVICE REQUIREMENTS

- The AND strobe kit is compatible with all AND display devices and the ZONEC2.
- We recommend a PoE+ power source when using the AND-STROBE-KIT-1.
- Test any connected peripheral before deployment (see *Programming* section).
- IPSIGNL-RWB and IPCDS-RWB require the AND-STROBE-KIT-1D. ([Contact AND sales](#))
- ZONEC2 and IPCSHD-MB does not require the PIA-2 board. Instead, connect the strobe directly to the device.

board down until the mounting tape makes contact with the main board.

Note: On controller boards in the MAC address range 20:46:F9:03:00:00-03:24:40, the J13 header has an extended height that will cause the peripheral board to sit at an angle with respect to the main board. The board can function in this position, or you can trim the J13 header pins with wire cutters to the height of the J9 header to make it level.

- For the AND-PIA-2D, reconnect bottom display cable to the 14-pin header.



WIRING

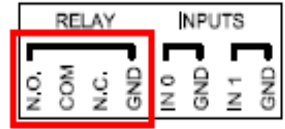
- Set the candela slider on the back of the strobe to select 15 or 15/75. The selected value will show on the front of the strobe at bottom.



- Use 18-22 AWG stranded or solid core wire to connect terminal 1, “-”, of the strobe to the relay “GND” on the PIA board and terminal 2, “+” to “N.O.” (normally



open). The strobe will then activate when the device triggers the output.



- Mount strobe to wall as detailed in the System Sensor Strobe installation instructions. The strobe can mount to single gang, 4” square double gang, or 4” octagon junction boxes.

PROGRAMMING

When using the 15VDC output, the device firmware must account for the power consumption of the external load. Choose this power budget level carefully to provide sufficient current to the external load, while allowing enough power for proper operation of the main device. This strobe requires 4000mW, and a recommended PoE+ power source.

Using the device's web page interface, select **Device Settings** → **Peripherals**. Set the *GPIO 0 Output Description* to “Strobe” for identification purposes. Set *GPIO 0 Output On During Audio Message* to “Yes”. Set the output power budget to “4000” in the *GPIO 0 Peripheral Power* field.

If a configuration file is used, add these settings to the GPIO tag:

```
<GPIO
description_output_gpio0="Strobe"
while_audio_output="X1"

peripheral_power_mw_output_gpio0="
4000"
/>
```

ACTIVATION

The strobe will activate when the device triggers output 0. To activate this output, use IPClockWise to directly control the GPIO output of the device within an event or alert, or use any of the other following methods (web page interface or configuration file). Note: if using a configuration file, reference the corresponding settings in the Gen 2 Configuration document on the AND Customer Portal. <https://www.anetd.com/portal/>

Audio Broadcasts (Paging or Intercom)

This method requires IPClockWise or other third-party software that supports paging to an AND device. To activate the strobe with any audio broadcast, go to **Device Settings → Peripherals** and set **GPIO 0 Output On During Audio Message** setting to "Yes." If more control is needed, in the **Device Settings → Priorities**, set **GPIO 0** to "Yes" in the Message and Audio Priorities section for the priority ranges desired. When sending audio to the strobe within a matching priority range, the strobe will activate. When the audio stream ends, the strobe will turn off. **Note:** for third-party software that does not support the AND priority levels, the priority level defaults to 50.

If using a configuration file:

```
<GPIO while_audio_output="X1" />
or
```

```
<Priorities >
  <action priority="1-25"
  gpio0="1" />
```

```
<action priority="50"
gpio0="1" />
</Priorities>
```

SIP Call

In **Device Settings → SIP**, set a valid *Extension* and *SIP Server* with which to register. In the **SIP GPIO Output Control Settings** section, set **Activate GPIO 0 During Active Call** to "Yes". When a SIP phone calls the strobe, the strobe will activate. When the call ends, the strobe will turn off.

If using a configuration file:

```
<SIPConfig
  gpio0_when_active_call="1"
/>
```

SIP Ringing

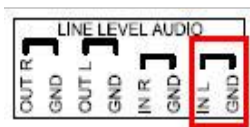
In **Device Settings → SIP**, set a valid *Extension* and *SIP Server* with which to register. Set the *SIP Mode* to "Phone". In the **SIP GPIO Output Control Settings** section, set **Activate GPIO 0 When Ringing** to "Yes". When a SIP phone or ring group calls the strobe's extension, the strobe will activate. When the ringing stops, the strobe will turn off.

If using a configuration file:

```
<SIPConfig
  gpio0_when_ringing="1"
/>
```

Line-In Audio

In **Device Settings → Audio**, under the *Line-In Audio Settings* section, set **Line In Activate GPIO 0 When Line In Active** to "Yes" so that the strobe activates when the



device detects the line-in audio signal. Set the *Line In Volume* and *Line In Audio Detection Level* to non-zero values. Note that a line-in signal source must connect to the “In L” and “GND” inputs on the board.

If using a configuration file:

```
<LineIn
  volume="8.000"
  gpio0_when_active="1"
/>
```

SNMP

SNMP set commands can turn the strobe on and off. In **Device Settings** → **Network**, set the *SNMP Write Community* name for writing to the device from a MIB browser or other SNMP software. In the SNMP software interface, access *gpioOutputControl.1 (OID .1.3.6.1.4.1.39866.3.1.4.11.1.21.1)*, and set to “1” to turn on the strobe, “0” to turn off the strobe.

You can also use SNMP to monitor the state of the strobe. In **Device Settings** → **Peripherals**, set *GPIO 0 Output Transitions Send SNMP Trap* to “Yes”. On **Device Settings** → **Network**, add the IP address and community name for a trap manager. The device will now send an SNMP trap to the configured manager when the strobe goes on or off.

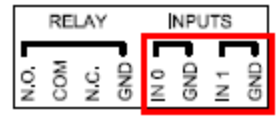
If using a configuration file (with nameTBD and 10.10.3.4 provided only as example):

```
<GPIO
  snmp_trap_for_output_gpio0="1"
/>
<SNMP
  write_community="nameTBD"
```

```
read_community="public" >
<TrapManager addr="10.10.3.4"
port="162" pdu_version="2"
community="nameTBD"
/>
</SNMP>
```

Contact Closure Input

In **Device Settings** → **Peripherals**, set *Activate GPIO 0 During GPIO 0 Input* or *Activate GPIO 0 During GPIO 1 Input* to “Yes”, depending on the input connected (0 or 1 respectively). When the input detects the contact closure, the strobe will activate. When the contact opens, the strobe will turn off.



If using a configuration file:

```
<GPIO
  gpio0_when_input_gpio0="1"
  gpio0_when_input_gpio1="1"
/>
```

ADDITIONAL RESOURCES

User Support:

<https://www.anetd.com/user-support/>

Technical Resources:

<https://www.anetd.com/user-support/technical-resources/>

AND Legal Disclaimer:

<https://www.anetd.com/legal/>



**Static
Electric
Warning**