

IPCSS-RWB

Small IP Display - Stainless Steel



Overview

Keep your facility notified and on schedule with the Stainless Steel PoE Small IP Display. Capture attention in any environment using multi-colored text, pixel graphics, 4 inch speaker, and LED flashers.

The IPCSS-RWB is typically installed in classrooms, offices, or any average sized room. It easily integrates with VoIP phone systems, approved 3rd party software, and includes ClockWise Campus software with purchase.

Description



DISPLAY

Multi-color LED scrolling text and pixel graphics. 1-line or 2-line display.



MICROPHONE

Hands-free two-way intercom.



FLASHER

One red, one white, one blue LED flasher. Individually controlled.



AUDIO

4" high-efficiency speaker audio coverage up to 600ft².



PERIPHERAL INTEGRATION

Connect a strobe, motion sensor, electronic lock, call button, etc.



SOFTWARE

ClockWise Campus software included. Compatible with approved third-party software.



SIP INTEGRATION

SIP-enabled. Easily interfaces with VoIP / SIP phone systems.



LIGHT SENSOR

Auto-dimming display.

Solutions

- Paging
- Intercom
- Bell scheduling
- Code alerts
- Emergency notification
- Access control
- Security monitoring
- Music streaming

Additional Features

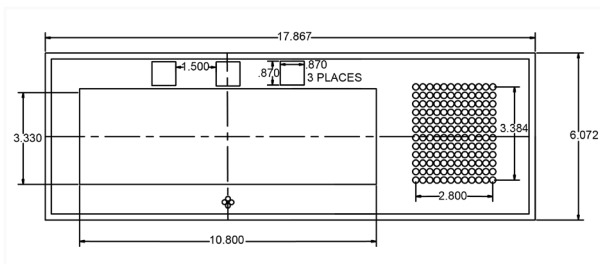
- Built-in web server
- Full multicast and broadcast support
- Requires Cat5 or Cat6 cable
- Back enclosure is included
- Atomic time

Compatible Peripherals

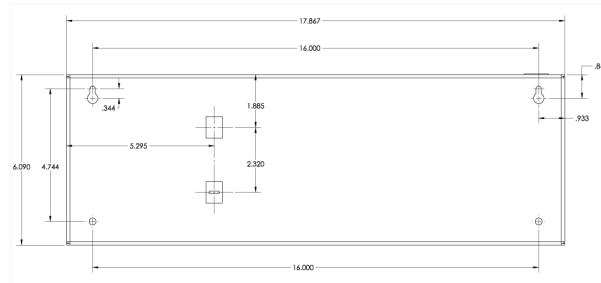
- **Strobe Kit**
- AND-STROBE-KIT-1
- **Call Button Kit with Mic**
- BTN-KIT-MIC-ND

Dimensions

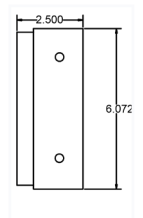
(Dimensions are subject to change)



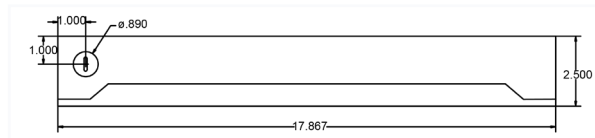
Front



Back



Side



Top

Specifications

Due to continual product development, specifications are subject to change without notice.

Power Input	PoE (IEEE802.3af) 15.4 W or PoE+ (IEEE802.3at) 30.0 W
Ethernet I/F	10/100 Mbps
Speaker Size	4"
Audio Power	8 W / 16 W
Frequency Response	150 Hz - 17 kHz
Audio Payload Types	G711, A-law and μ -law
Average Sensitivity	94dB, 1W / 1 M
Supported Protocols	SIP, IPv4, IPv6, 802.1X, HTTP, SLP, TFTP, NTP, SNMPV1 & SNMPV2c, DHCP, IGMP, ICMP, TCP/IP, LLDP-MED, UDP, MDNS & MDNS-SD
General Purpose Interface	2 GPI: 1 via RJ-11, 1 via Cable Harness 1 GPO 17.5 VDC
Operating Temperature	14° TO 122° F (-10° TO 50° C)
Dimensions	17.87" W x 6.07" H x 2.5" D
Weight	5 lbs (2.27 kg)
Warranty	2 Year Limited

