

IPCSS-RWB-MB

Small IP Display - Matte Black



Overview

Keep your facility notified and on schedule with the Matte Black PoE Small IP Display. Capture attention in any environment using multi-colored text, pixel graphics, 4 inch speaker, and LED flashers.

The IPCSS-RWB-MB is typically installed in classrooms, offices, or any average sized room. It easily integrates with VoIP phone systems, approved 3rd party software, and includes ClockWise Campus software with purchase.

Description

2:46 PM
42

DISPLAY

Multi-color LED scrolling text and pixel graphics. 1-line or 2-line display.



MICROPHONE

Hands-free two-way intercom.



FLASHER

One red, one white, one blue LED flashers. Individually controlled.



AUDIO

4" high-efficiency speaker audio coverage up to 600ft².



PERIPHERAL INTEGRATION

Connect a strobe, motion sensor, electronic lock, call button, etc.



SOFTWARE

ClockWise Campus software included. Compatible with approved third-party software.



SIP INTEGRATION

SIP-enabled. Easily interfaces with VoIP / SIP phone systems.



LIGHT SENSOR

Auto-dimming display.

Solutions

- Paging
- Intercom
- Bell scheduling
- Code alerts
- Emergency notification
- Access control
- Security monitoring
- Music streaming

Additional Features

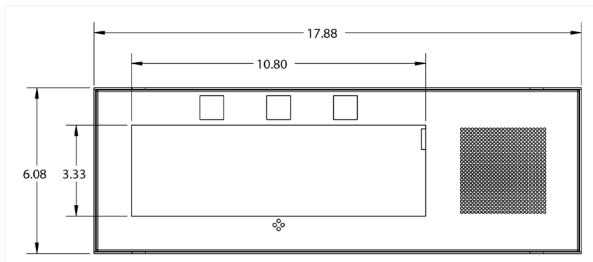
- Built-in web server
- Full multicast and broadcast support
- Requires Cat5 or Cat6 cable
- Back enclosure is included
- Atomic time

Compatible Peripherals

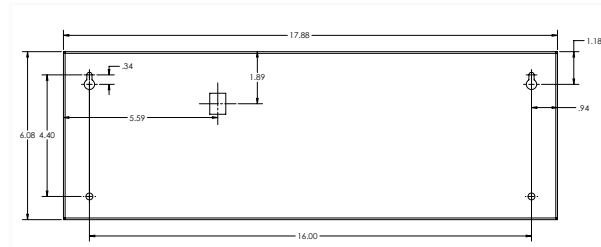
- **Strobe Kit**
- AND-STROBE-KIT-1
- **Call Button Kit with Mic**
- BTN-KIT-MIC-ND

Dimensions

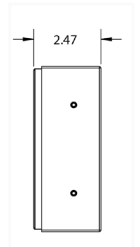
(Dimensions are subject to change)



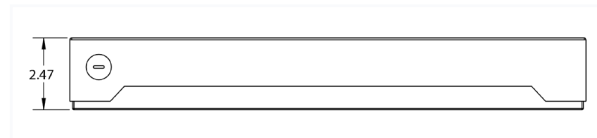
Front



Back



Side



Top

Specifications

Due to continual product development, specifications are subject to change without notice.

Power Input	PoE (IEEE802.3af) 15.4 W or PoE+ (IEEE802.3at) 30.0 W
Ethernet I/F	10/100 Mbps
Speaker Size	4"
Audio Power	8 W / 16 W
Frequency Response	150 Hz - 17 kHz
Audio Payload Types	G711, A-law and μ -law
Average Sensitivity	94dB, 1W / 1 M
Supported Protocols	SIP, IPv4, IPv6, 802.1X, HTTP, SLP, TFTP, NTP, SNMPV1 & SNMPV2c, DHCP, IGMP, ICMP, TCP/IP, LLDP-MED, UDP, MDNS & MDNS-SD
General Purpose Interface	2 GPI: 1 via RJ-11, 1 via Cable Harness 1 GPO 17.5 VDC
Operating Temperature	14° TO 122° F (-10° TO 50° C)
Dimensions	17.87" W x 6.07" H x 2.5" D
Weight	7 lbs (3.2 kg)
Warranty	2 Year Limited

