

Zone System Interface Control-

ZONE-SIC

OVERVIEW

The Zone System Interface Controller functions as a Power over Ethernet (PoE / PoE+) IP endpoint, connecting to standard data networks. The device acts as an IP hub for analog sensors and access control devices, such as presence / proximity sensors, status indicators, temperature sensors, and electronic door locks.

Sensors, Contact Closures, and Access Control Devices



FEATURES

Built-In Web Server

- Send broadcast messages to IP-enabled devices from the web page
- Configurable volume
- Device Status
- Field upgradable

Easy Installation

- Requires PoE CAT 5 connection to network (up to 300 ft)
- No power cord needed
- Green "Power On" indicator
- Wall mount available (not included)

General Purpose Input Output

- 2 RJ-14 inputs for sensor control including 12/24V DC @100mA supply for each input
- 1 general purpose output relay for dry contact closure or switched 12/24V DC @250/125mA (factory set to 12V DC @250mA)

Sensor Applications

- Access control, doors, gates
- Motion detection
- Room occupancy

SOFTWARE OPTIONS

AND devices can operate standalone. They do not require external software for atomic timekeeping or broadcasting messages from the device's web server. However, you can use application software to take advantage of the device capabilities, and then integrate the devices into applications like a mass notification system, a phone network, etc.

AND IPClockWise (Developed and Supported by AND)

- Instantly finds and provides controls for all of your AND devices
- Schedules events and alarms, with additional functionality of a stopwatch, timer, and optional sound library
- Sends news / RSS / Twitter / weather / stock feeds, etc. to AND devices with a display

NOTE: AND IPClockWise and third-party software can run concurrently.

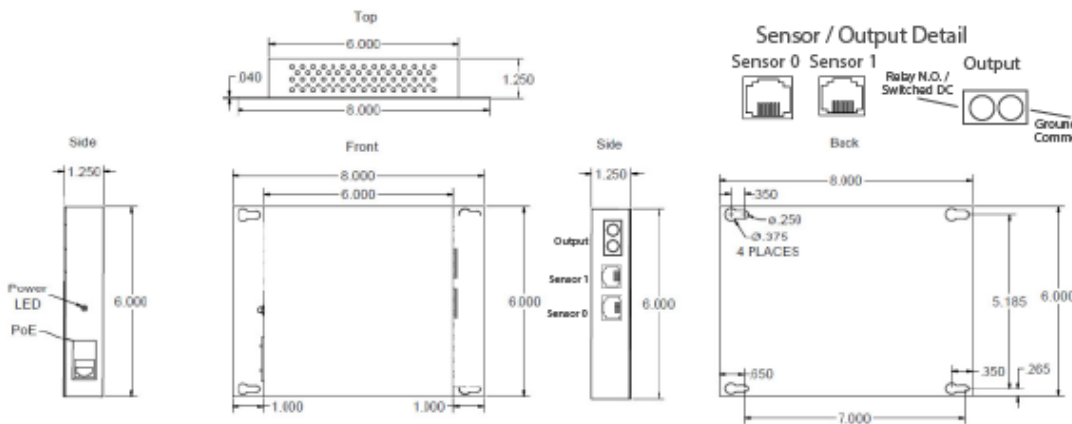
Third-Party Software

AND partners with several third-party software providers.

- InformaCast (Singlewire)
- Revolution (Syn-Apps)
- IPSession (IPCelerate)
- MessageNet Systems
- BellComander (Acro Vista)

AND also works well with SIP and VoIP products such as Asterisk, 3CX, ShoreTel, etc.

DIMENSIONS



Conforms to UL STD 60950-1
Cert. to CAN/CSA STD C22.2 #60950-1
42.5V-57.0V DC, 25.5 W Max
802.3at PoE+

Model: ZONE-SIC
Advanced Network Devices
www.anetd.com

SPECIFICATIONS

Ethernet I/F	10/100 Mbps
Power Input	PoE (IEEE802.3af) 15.4 W or PoE+ (IEEE802.3at) 30.0 W
Supported Protocols	SIP, IPv4, HTTP, SLP, TFTP, NTP, SNMPV1 & SNMPV2c, DHCP, IGMP, ICMP, TCP/IP, UDP, MDNS & MDNS-SD
Operating Temperature	0° to 50° C (32° to 122° F)
Dimensions	8.0" W x 1.25" H x 6.0" D
Weight	1 lb 7 oz (652 g)
Certifications	UL STD 60950-1 and CAN/CSA STD C22.2 #60950-1
Warranty	2 Year Limited

